

Canadian Shark Class Association

STANDARD SAILING INSTRUCTIONS (SSI) 2018



*These instructions are sanctioned by the
Canadian Shark Class Association for use
at Counter Regattas*

1 RULES

- 1.1 The regatta will be governed by the rules as defined in *The Racing Rules of Sailing*.
- 1.2 National prescriptions of Sail Canada will apply.
- 1.3 The International Shark Class Association (ISCA) General Class Rules and Specifications will apply.

2 NOTICES TO COMPETITORS

See Attachment A.

3 CHANGES TO SAILING INSTRUCTIONS

Any change to the sailing instructions will be posted before 0900 on the day it will take effect, except that any change to the schedule of races will be posted by 2000 on the day before it will take effect.

4 SIGNALS MADE ASHORE

- 4.1 The location where signals made ashore will be displayed is described in Attachment A.
- 4.2 When flag AP is displayed ashore, "1 minute" is replaced with "not less than 60 minutes" in the race signal AP.

5 SCHEDULE OF RACES

- 5.1 On the first day of racing the scheduled time of the warning signal is 1100.
- 5.2 On subsequent days of racing the scheduled time of the warning signal is 1000.
- 5.3 On the last day of the regatta no warning signal will be made after 1500.

6 CLASS FLAGS

The class flag will be the Shark insignia on a contrasting background.

7 RACING AREAS

See Attachment A.

8 THE COURSES

- 8.1 The course diagrams are on the pages following SI 13 of RRS S. They show the courses, the order in which marks are to be passed, and the side on which each mark is to be left.
- 8.2 No later than the warning signal, the race committee signal boat will display the course designation and the approximate compass bearing of the first leg.

- 8.3 If one of the leeward gate marks is missing boats shall round the existing leeward mark leaving it to port. This changes RRS 28.2 (c).

9 MARKS

See Attachment A.

10 AREAS THAT ARE OBSTRUCTIONS

See Attachment A.

11 THE START

- 11.1 The starting line is described in Attachment A.
- 11.2 A boat that does not start within 10 minutes after her starting signal will be scored Did Not Start without a hearing. This changes RRS A4 and A5.

12 CHANGE OF THE NEXT LEG OF THE COURSE

- 12.1 To change the next leg of the course, the race committee will lay a new mark (or move the finishing line) and remove the original mark as soon as practicable. When in a subsequent change a new mark is replaced, it will be replaced by an original mark.
- 12.2 If the windward marks (Mark 1 and 1a) are changed they will be replaced by a single mark.
- 12.3 If the leeward marks (Mark 2p and 2s) are changed they will be replaced by a single mark.
- 12.4 Courses will not be shortened to less than 3 legs in length. The leg to 1a is not considered a leg of the course for this purpose.

13 THE FINISH

- 13.1 The finishing line is described in Attachment A.
- 13.2 If it is judged by the race committee that a boat, or a few boats, can finish within the finishing window (SSI 14.3 below) the race committee may award a finishing position to these boats. The awarding of such score will not be grounds for redress. This changes RRS 28.1.

14 TIME LIMITS AND TARGET TIMES

- 14.1 If no boat has passed Mark 1 within the 45 minutes of the start the race will be abandoned.
- 14.2 If no boat sails the course and finishes within 2 hours after the start the race will be abandoned.
- 14.3 Boats failing to finish within 30 minutes after the first boat sails the course and finishes will be

CANADIAN SHARK CLASS ASSOCIATION STANDARD SAILING INSTRUCTIONS

scored Did Not Finish without a hearing. This changes RRS 35, A4 and A5.

- 14.4** The target time is 60 minutes. Failure to meet the target time will not be grounds for redress. This changes RRS 62.1 (a).

15 PROTESTS AND REQUESTS FOR REDRESS

- 15.1** Protest forms are available at the race office (see Attachment A for the location). Protests and requests for redress or reopening shall be delivered there within the time limit.

- 15.2** The protest time limit is 45 minutes after the signal boat signals her return to her mooring.

- 15.3** Notices will be posted no later than 10 minutes after the protest time limit to inform competitors of hearings in which they are parties or named as witnesses. Hearings will be held in the protest room, (see Attachment A for the location) at, beginning at the time posted.

- 15.4** Notices of protests by the race committee, technical committee or protest committee will be posted to inform boats under RRS 61.1(b).

- 15.5** On the last scheduled day of racing a request for redress based on a protest committee decision shall be delivered no later than 30 minutes after a decision was posted. This changes RRS 62.2.

16 SCORING

- 16.1** 2 races are required to be completed to constitute a series.

- 16.2** (a) When fewer than 5 races have been completed, a boat's series score will be the total of her race scores.

(b) When 5 or more races have been completed, a boat's series score will be the total of her race scores excluding her worst score.

17 SAFETY REGULATIONS

- 17.1** Before the warning signal of her first race each day, each boat shall sail past the stern of the committee boat, hail her sail number, and be acknowledged by a member of the race committee. [DP]

- 17.2** A boat that retires from a race shall notify the race committee as soon as possible. [DP]

18 REPLACEMENT OF CREW OR EQUIPMENT

- 18.1** Substitution of competitors will not be allowed without prior written approval of the race committee. [DP]

- 18.2** Substitution of damaged or lost equipment will not be allowed unless authorized by the race committee. Requests for substitution shall be made to the committee at the first reasonable opportunity. [DP]

19 EQUIPMENT AND MEASUREMENT CHECKS

On the water, a boat can be instructed by a member of the race committee or the technical committee to proceed immediately to a designated area for inspection. Ashore, equipment may be inspected or measured at times specified in the Notice of Race.

20 EVENT ADVERTISING

See Appendix A

21 HAUL-OUT RESTRICTIONS

Unless directed by the race committee or the technical committee, boats shall not be hauled out during the regatta except with and according to the terms of prior written permission of the race committee. [DP]

22 RADIO COMMUNICATION

- 22.1** Except in an emergency, a boat that is racing shall not make voice or data transmissions and shall not receive voice or data communication that is not available to all boats. [DP]

- 22.2** The race committee may communicate information on VHF 72. Failure to make these communications or the sequence in which they are made shall not be ground for redress.

23 PRIZES

See Attachment A.

24 DISCLAIMER OF LIABILITY

Competitors participate in the regatta entirely at their own risk. See RRS 4, Decision to Race. The organizing authority will not accept any liability for material damage or personal injury or death sustained in conjunction with or prior to, during, or after the regatta.

25 INSURANCE

Each participating boat shall be insured with valid third-party liability insurance with a minimum cover of \$2,000,000 per incident or the equivalent.

'Attachment A' to CSCA Standard Shark Sailing Instructions



2. Notices to Competitors

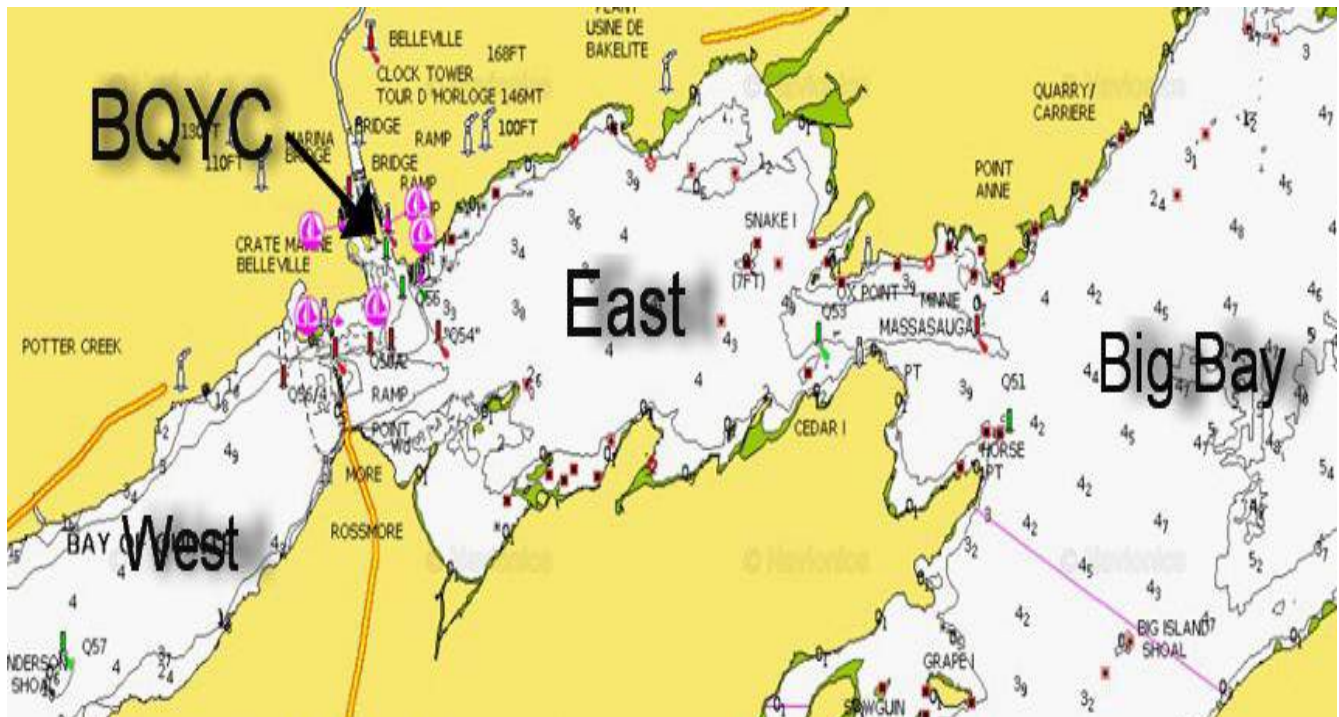
Notice to Competitors will be posted on the south window facing the club's patio.

4. Signals Made Ashore

Signals made ashore will be displayed from the club's flagpole on the south side of the clubhouse.

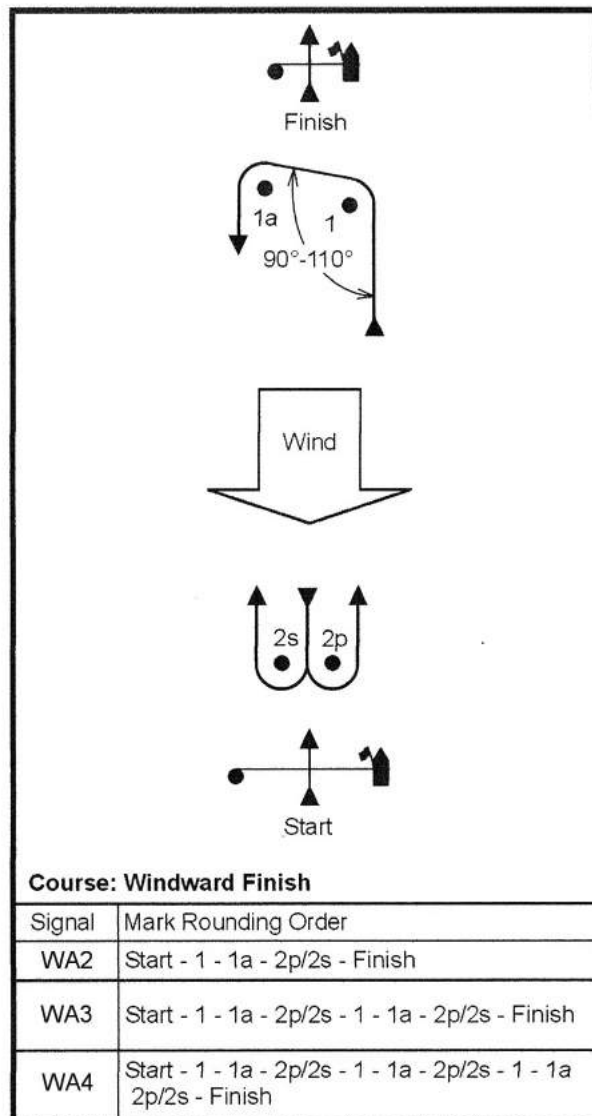
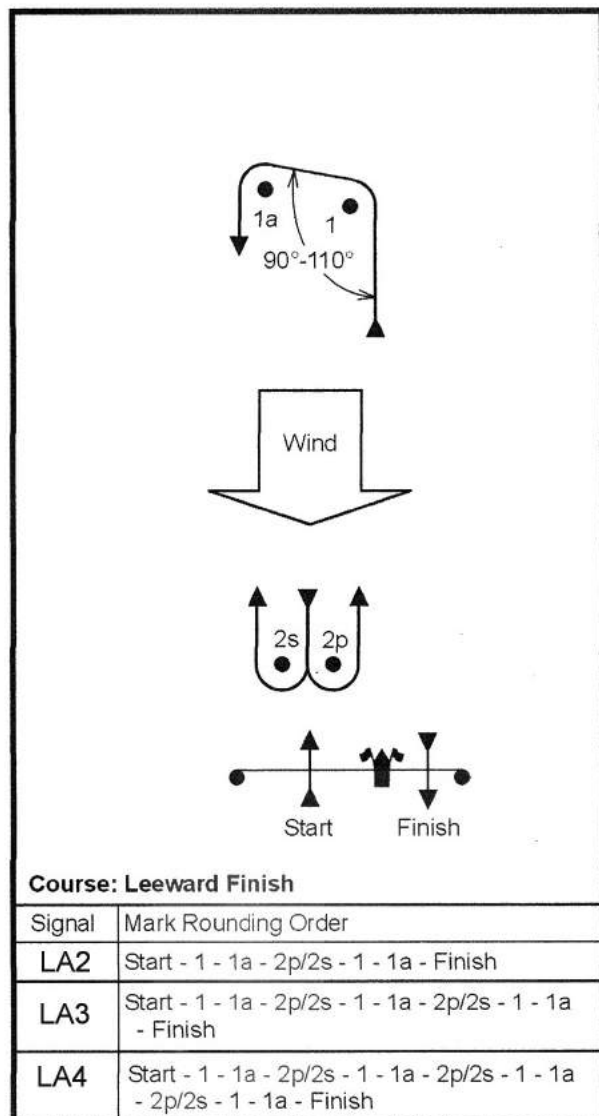
7. Racing Areas (see below)

- 7.1 Course Area 1 - Belleville Bay East of the bridge to Pr. Edward County.
- 7.2 Course Area 2 - West side of the bridge to Pr. Edward County.
- 7.3 Course Area 3 - Big Bay – (approx. 5 nm east of the club)
- 7.4 The race area for the day will be announced at the skippers meeting and posted on the *Notice to Competitors* window.



8. The Courses

8.1 Course diagrams are as follows. **These replace the RRS Course Diagrams.**



8.2 No later than the warning signal, the race committee boat will display the course designation by using sign boards hanging on the life lines on the port side of the RC boat. **This will replace 8.2 in the CSCA Standard Sailing Instructions.**

8.4 Where the course diagram shows both the starting and finishing marks, both may be in place during the start or the finish

9. Marks

- Windward mark 1 will be a dark Orange Tetrahedral
- Offset mark 1a will be a Red Ball
- Leeward marks 2s & 2p will be dark Orange Tetrahedrals
- Change mark will be a light Orange Cylinder
- Starting mark will be a light Orange Cylinder
- Finishing mark will be a Yellow Cylinder

10. Obstructions

Be aware of navigational marks when sailing to the race areas. Make sure you leave both green navigational marks to starboard when leaving BQYC and to port when returning.

11. The Start

- 11.1 The starting line will be between a staff displaying an orange flag on the RC boat and a light Orange Cylinder mark.

12. Changing the Next Leg of the Course (RRS 33)

- 12.5 A green flag and a red flag will be used in place of the green triangle and red rectangle described in RRS 33 (a) (2). The new windward mark will be a light orange cylinder with no offset mark.

13. The Finish

- 13.1 The finish line will be between the staff displaying the blue flag on the RC boat and a Yellow Cylinder mark.

15. Protests and Requests for Redress

- 15.6 The location of the protest room will be posted on the notice window and announced at the skippers meeting.

20. Event Advertising

General Class rules apply.

23. Prizes will be given as follows:

- Overall winner: Kingston - Quinte Eastern Shark Championship Trophy.
- Prizes for the top 3 boats
- Top all female crew
- Top youth crew where all members are under 25 years of age.